

# Remote App User Interface



Select views in full screen or split screen



Pan camera across the room and zoom



AC-150 - 4 views (2 inputs)  
AC-200 - 6 views (4 inputs)



Freeze/Unfreeze video



Refresh video feed



Save views to a preset for easy retrieval



Annotate on screen and erase



Hide Remote User's picture-in-picture (PiP) view



Turn off Remote User's camera; tap again to turn on



Converse with other Remote Users in sidebar mode



Mute Remote User's microphone; tap again to unmute

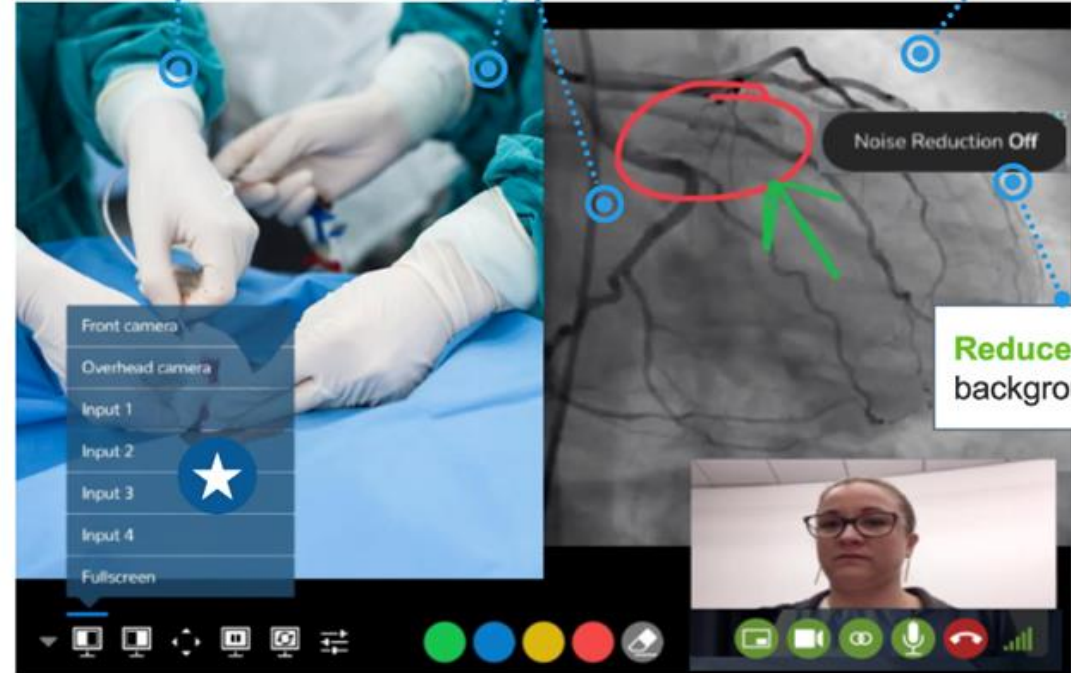


Monitor Remote User's internet signal strength in real-time

CONNECT in real-time to a procedure room

DISPLAY two views side-by-side

VIEW external imaging streams connected to the Avail Console



Reduce transient background noise